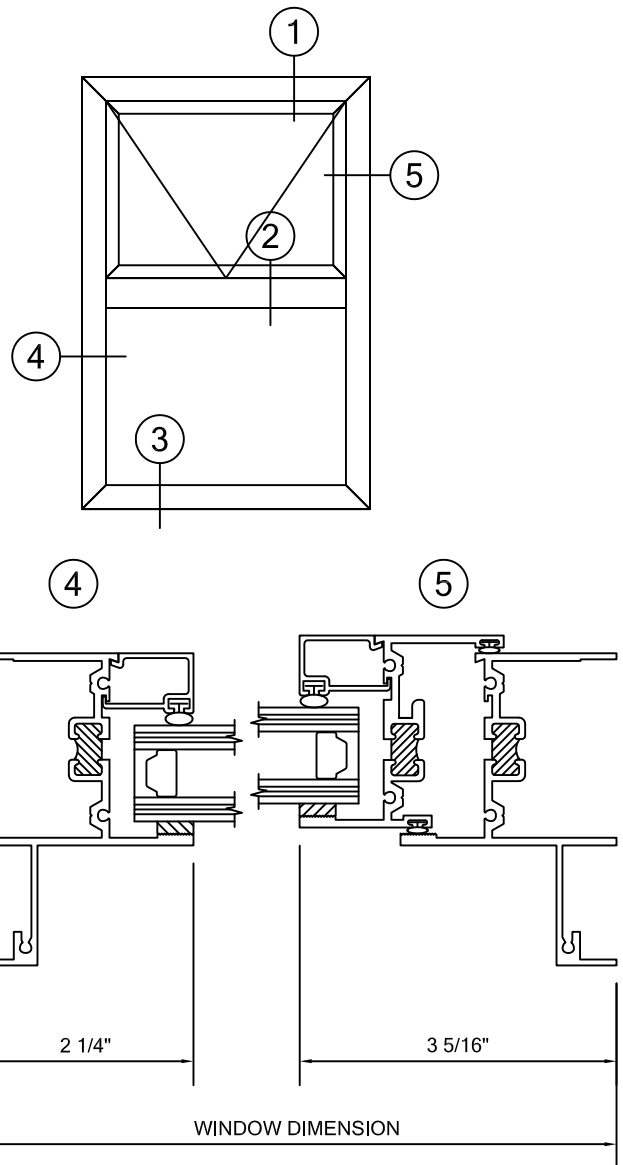
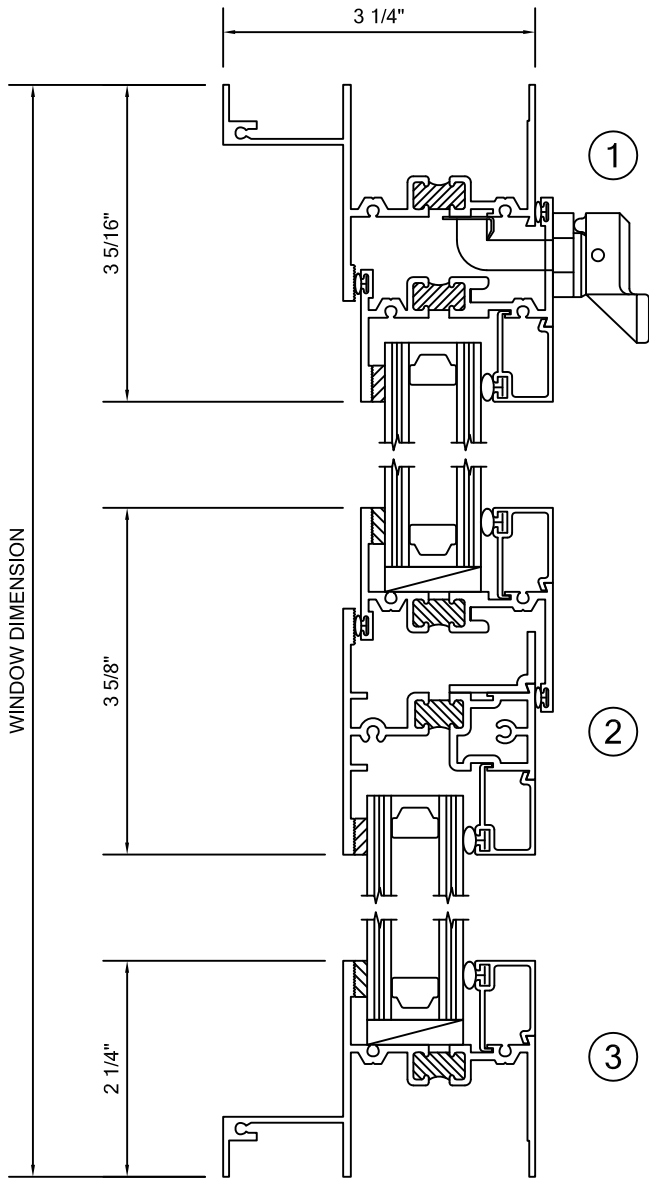


# ALLIANCE WINDOW COMPANY, INC

## Commercial Aluminum Windows & Doors



**PRODUCT INFORMATION:**  
**FIXED/ PROJECTED WINDOW**  
**2000 SERIES**  
**3-1/4" FRAME DEPTH**  
**MFG CODE: 2350 PIIG**  
 - AAMA C-70 RATED  
 - CRF OF 58  
 - STC 39  
 - 105 PSF STRUCTURAL  
 - 12 PSF WATER

\*THERMAL FRAME SHOWN ALSO  
 AVAILABLE WITH NON-THERMAL FRAMING

\*FRAMING SHOWN AS EQUAL LEG, ALSO AVAILABLE IN NAIL FIN,  
 FLANGE FRAME AND PROJECT SPECIFIC APPLICATIONS.