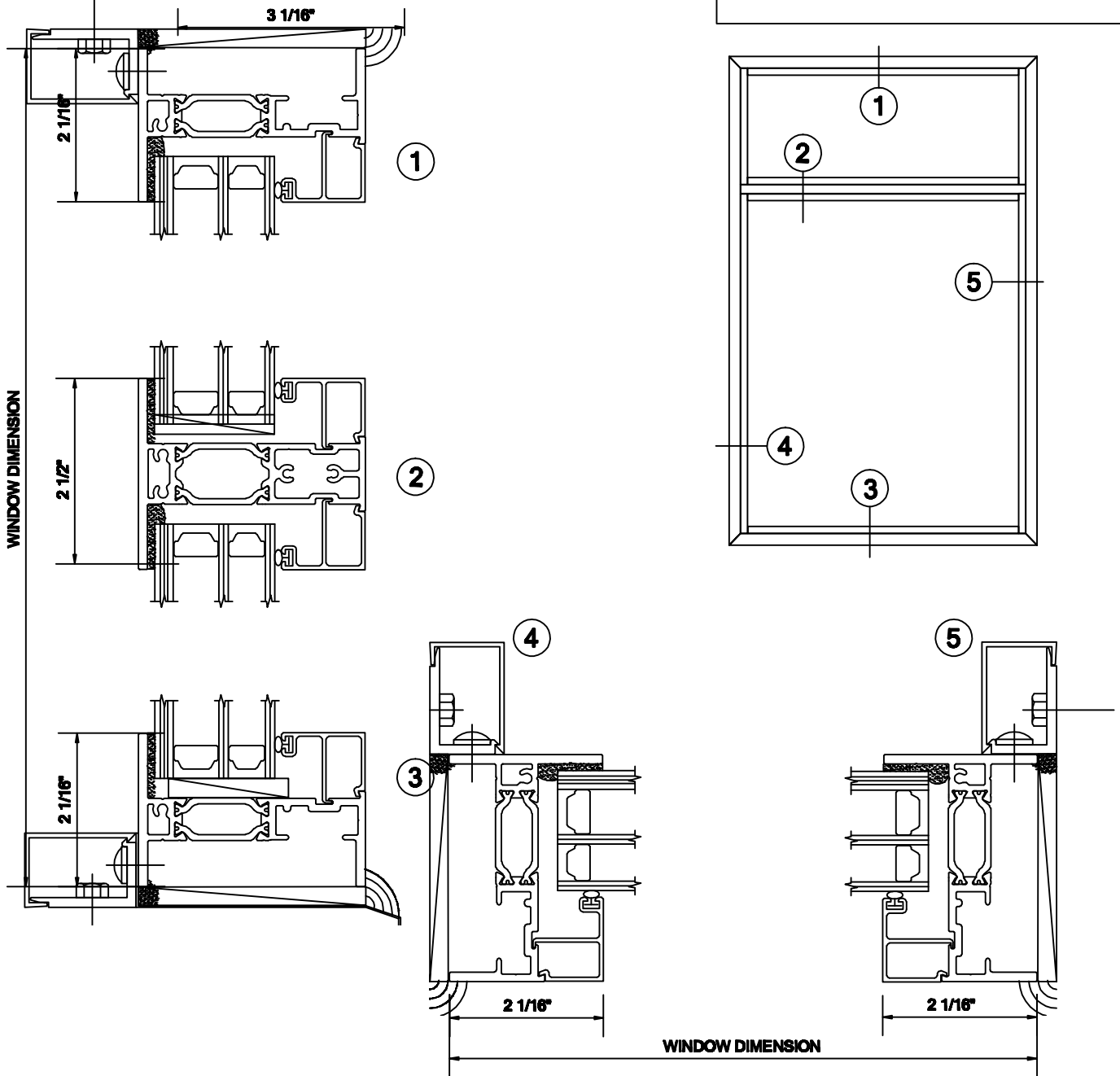


# ALLIANCE WINDOW COMPANY, INC

**PRODUCT INFORMATION:**  
**PROJECTED WINDOW**  
**2050 SERIES**  
**3-1/16" FRAME DEPTH**  
**MFG CODE: 2550 TS**  
 - AAMA CW 100 RATED  
 - 180 PSF STRUCTURAL  
 - 15 PSF WATER  
 - NFRC U-FACTOR 0.19

## Commercial Aluminum Windows & Doors



\*FRAMING SHOWN AS EQUAL LEG, ALSO AVAILABLE IN NAIL FIN, FLANGE FRAME AND PROJECT SPECIFIC APPLICATIONS.

14152 ARNDT ROAD N.E. AURORA, OREGON 97002  
 PHONE: 503.678.2966 FAX: 503.678.6876 WEB: WWW.ALLIANCEWINDOW.NET