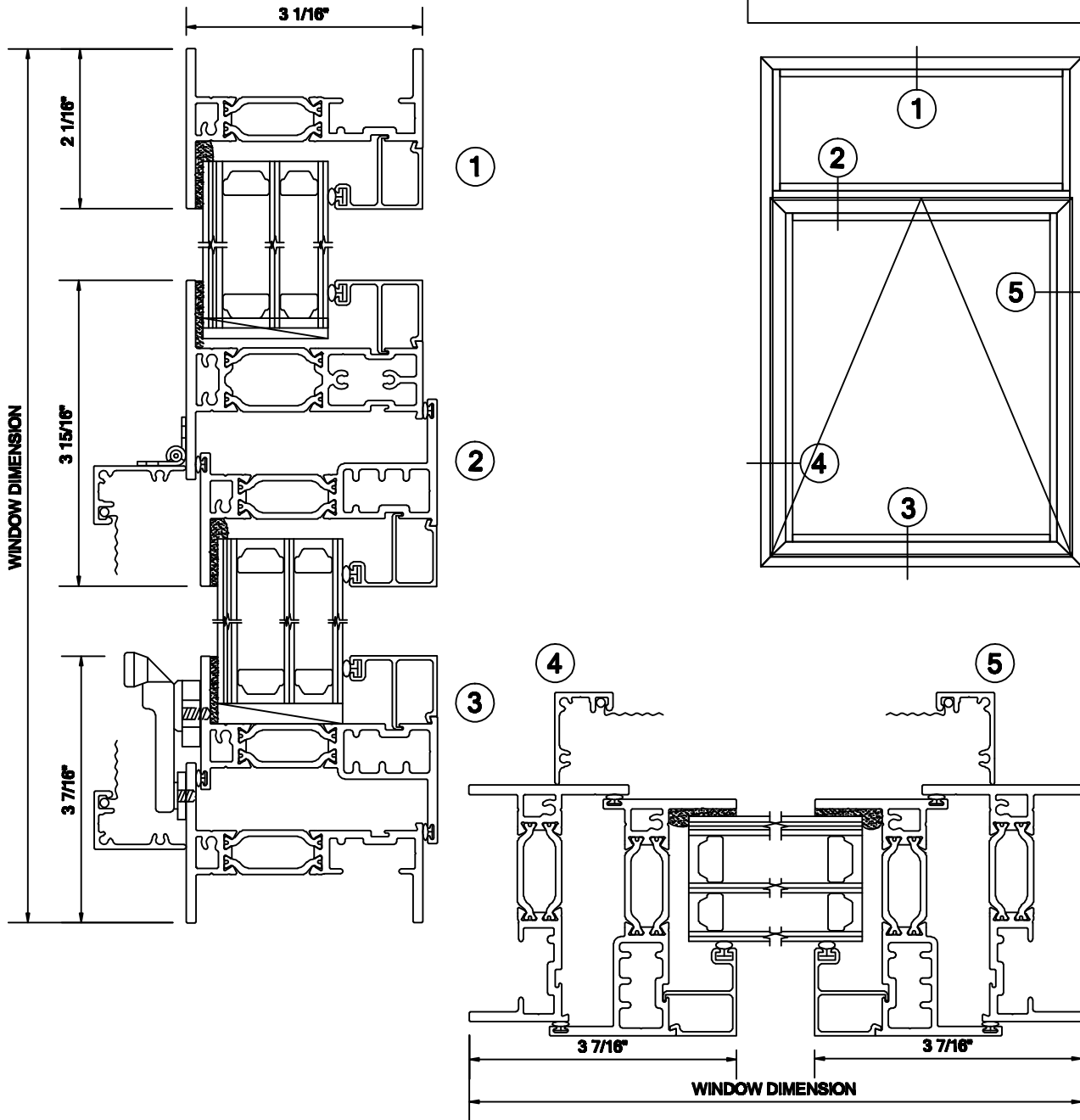


ALLIANCE WINDOW COMPANY, INC

Commercial Aluminum Windows & Doors

PRODUCT INFORMATION:
PROJECTED WINDOW
2050 SERIES
3-1/16" FRAME DEPTH
MFG CODE: 2550 TS
 - AAMA CW 100 RATED
 - 180 PSF STRUCTURAL
 - 15 PSF WATER
 - NFRC U-FACTOR 0.30



*FRAMING SHOWN AS EQUAL LEG, ALSO AVAILABLE IN NAIL FIN, FLANGE FRAME AND PROJECT SPECIFIC APPLICATIONS.

14152 ARNDT ROAD N.E. AURORA, OREGON 97002
 PHONE: 503.678.2966 FAX: 503.678.6876 WEB: WWW.ALLIANCEWINDOW.NET